



TrachSeal™

Closed suction systems



Critical Care ▪ TrachSeal



TrachSeal™ Closed suction systems

Every time any part of a breathing system is opened to the atmosphere a number of problems for both the patient and nursing staff can occur:

- There is an immediate loss of PEEP to the patient and a potential for compromising patient ventilation
- Oxygen desaturation may have an impact on the patient's overall condition
- Bacteria and other pathogens may find their way into the lungs with the introduction of an open catheter
- A coughing reflex by the patient may put the healthcare provider at risk from cross-infection

Since the introduction of closed suction systems in 1987, care providers have been offered a solution to keep the breathing system, and consequently PEEP, intact resulting in patient ventilation uncompromised.

Closed suction enables the clinician to clear the lungs of secretions while maintaining ventilation and minimising contamination with the least possible disruption to the patient.

Prevention of VAP

Ventilator associated pneumonia (VAP) is a hospital acquired infection, which can be efficiently fought when applying certain strategies. It has a significant impact on patient's health, length of stay and hospital cost.

Closed suction greatly reduces the potential for contamination from the bacteria which cause VAP. Maintaining a closed breathing system is part of the ventilator care bundle, designed to reduce the incidence of VAP in the hospital.

Another important factor in infection control is the cough reflex of the patient. By using a closed suction system the care provider reduces the risk of cross infection by aerosolised pathogens.

Intersurgical TrachSeal closed suction systems

TrachSeal features an ultra clear, new softer sleeve, allowing the clinician greater feel when inserting the catheter with optimum visibility of blockage assessments.

Our suction control valve is responsive and allows for single handed control of the applied suction force. The positive locking mechanism is designed to prevent suction being accidentally applied.

[▶ Watch the video](#)

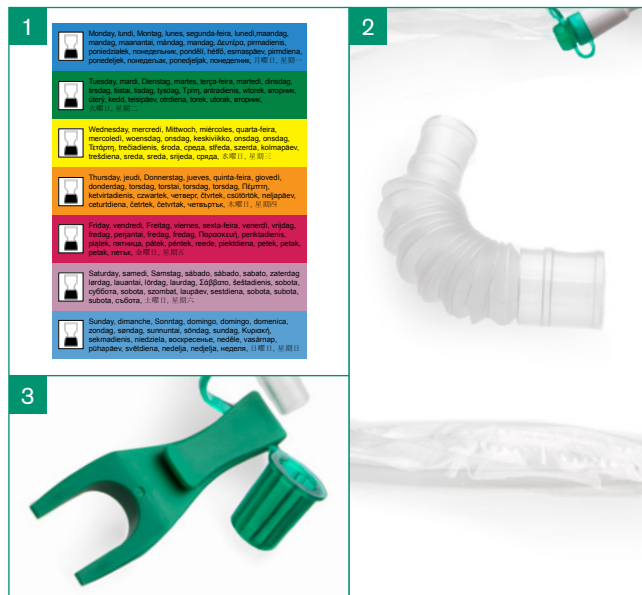


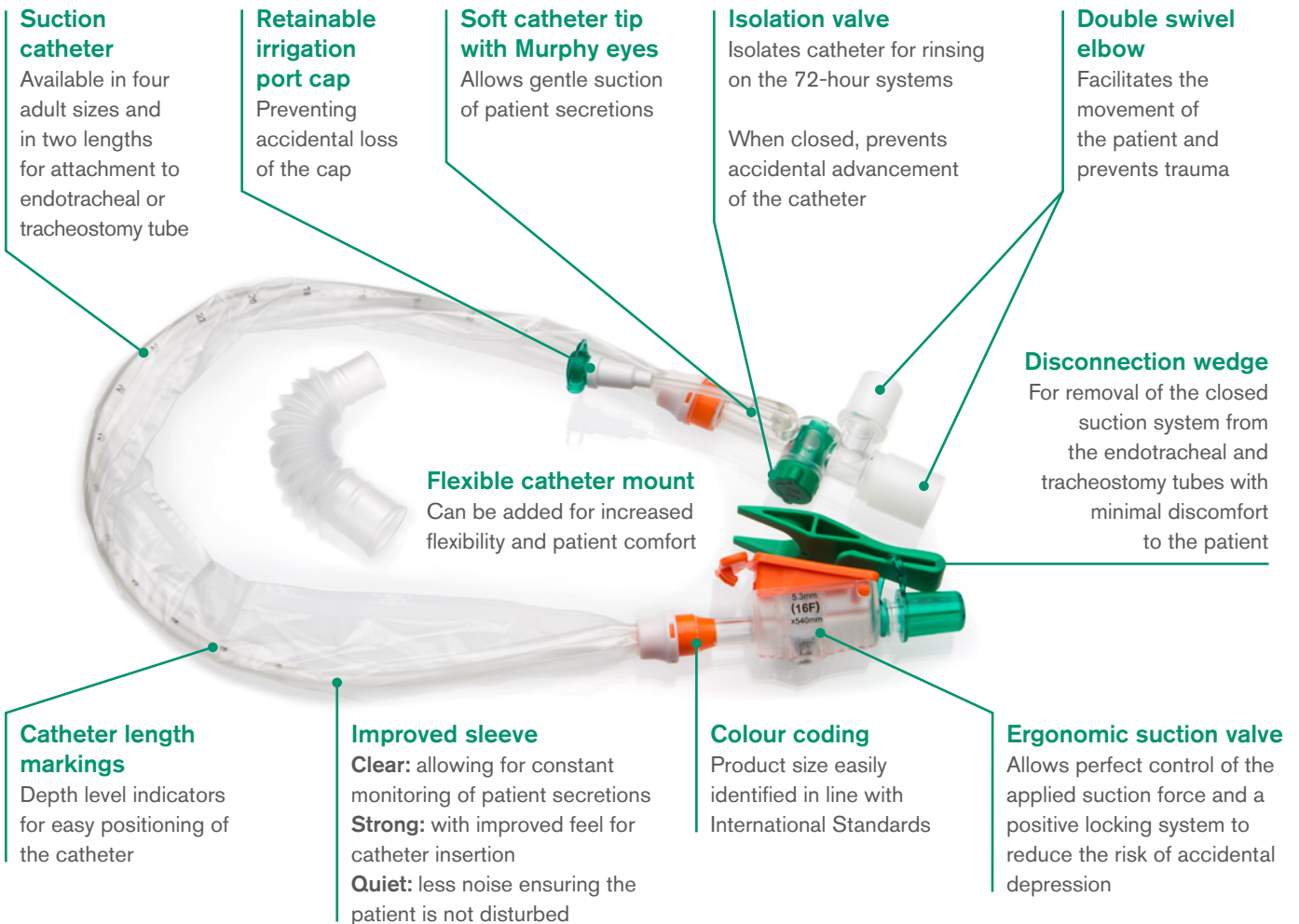
Adult TrachSeal closed suction systems

Trachseal closed suction systems are available for 24 hour or 72 hour usage depending on patient requirements. There are two length options to allow attachment to either endotracheal or tracheostomy tubes. The endotracheal products feature a catheter length of 54 cm and the tracheostomy tube variants have a catheter length of 30.5 cm.

All Intersurgical TrachSeal systems are supplied with:

1. Day stickers which easily identify change requirements
2. 15F–22F catheter mount for flexible connection to the patient
3. A disconnection wedge for removal of the closed suction system from the endotracheal and tracheostomy tubes with minimal discomfort to the patient





24 hour TrachSeal

Code	Description	Colour	Size	Box Qty.
3240002	TrachSeal adult endotracheal closed suction system, 24 hour	Orange	F16	15
3240001	TrachSeal adult endotracheal closed suction system, 24 hour	Green	F14	15
3240000	TrachSeal adult endotracheal closed suction system, 24 hour	White	F12	15
3240003	TrachSeal adult endotracheal closed suction system, 24 hour	Black	F10	15
3240007	TrachSeal adult tracheostomy closed suction system, 24 hour	Orange	F16	15
3240006	TrachSeal adult tracheostomy closed suction system, 24 hour	Green	F14	15
3240005	TrachSeal adult tracheostomy closed suction system, 24 hour	White	F12	15
3240004	TrachSeal adult tracheostomy closed suction system, 24 hour	Black	F10	15

72 hour TrachSeal

Code	Description	Colour	Size	Box Qty.
3720002	TrachSeal adult endotracheal closed suction system, 72 hour	Orange	F16	15
3720001	TrachSeal adult endotracheal closed suction system, 72 hour	Green	F14	15
3720000	TrachSeal adult endotracheal closed suction system, 72 hour	White	F12	15
3720003	TrachSeal adult endotracheal closed suction system, 72 hour	Black	F10	15
3720007	TrachSeal adult tracheostomy closed suction system, 72 hour	Orange	F16	15
3720006	TrachSeal adult tracheostomy closed suction system, 72 hour	Green	F14	15
3720005	TrachSeal adult tracheostomy closed suction system, 72 hour	White	F12	15
3720004	TrachSeal adult tracheostomy closed suction system, 72 hour	Black	F10	15



24 hour TrachSeal with saline ampoules

Code	Description	Colour	Size	Box Qty.
3241002	TrachSeal adult endotracheal closed suction system with saline ampoules, 24hour	Orange	F16	15
3241001	TrachSeal adult endotracheal closed suction system with saline ampoules, 24hour	Green	F14	15
3241000	TrachSeal adult endotracheal closed suction system with saline ampoules, 24hour	White	F12	15
3241003	TrachSeal adult endotracheal closed suction system with saline ampoules, 24hour	Black	F10	15
3241007	TrachSeal adult tracheostomy closed suction system with saline ampoules, 24hour	Orange	F16	15
3241006	TrachSeal adult tracheostomy closed suction system with saline ampoules, 24hour	Green	F14	15
3241005	TrachSeal adult tracheostomy closed suction system with saline ampoules, 24hour	White	F12	15
3241004	TrachSeal adult tracheostomy closed suction system with saline ampoules, 24hour	Black	F10	15

72 hour TrachSeal with saline ampoules

Code	Description	Colour	Size	Box Qty.
3721002	TrachSeal adult endotracheal closed suction system with saline ampoules, 72hour	Orange	F16	15
3721001	TrachSeal adult endotracheal closed suction system with saline ampoules, 72hour	Green	F14	15
3721000	TrachSeal adult endotracheal closed suction system with saline ampoules, 72hour	White	F12	15
3721003	TrachSeal adult endotracheal closed suction system with saline ampoules, 72hour	Black	F10	15
3721007	TrachSeal adult tracheostomy closed suction system with saline ampoules, 72hour	Orange	F16	15
3721006	TrachSeal adult tracheostomy closed suction system with saline ampoules, 72hour	Green	F14	15
3721005	TrachSeal adult tracheostomy closed suction system with saline ampoules, 72hour	White	F12	15
3721004	TrachSeal adult tracheostomy closed suction system with saline ampoules, 72hour	Black	F10	15

Accessories

Code	Description	Box Qty.
3022000	Suction line splitter for use with closed suction and oral care lines	25
3700000	0.9% NaCl solution for closed suction systems, 15 ml	70

Make an enquiry

IS1.27 ▪ Issue 11 10.24



Intersurgical Ltd, Crane House, Molly Millars Lane, Wokingham, Berkshire, RG41 2RZ, UK
 T: +44 (0)118 965 6300 info@intersurgical.com www.intersurgical.com



The manufacturer Intersurgical Ltd is certified to ISO 14001:2015, ISO 9001:2015, ISO 13485:2016 and MDSAP

Please think before you print
 Save energy and paper.
 If you must print this information sheet please print it double sided.